

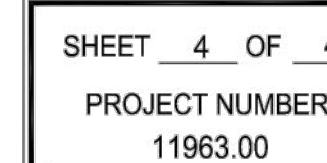


COASTAL CONSTRUCTION CONTROL MONUMENTS

COMMENTS:

THE HORIZONTAL VALUES FOR THE CCOL CONTROL MONUMENTS LISTED ABOVE IN FLORIDA EAST ZONE, NAD 83 (2011), U.S. SURVEY FEET AND DECIMAL UNITS THEREOF AND WERE ESTABLISHED BY ANGLE AND DISTANCE FROM THE TRAVERSE SHOWN ON THIS SHEET. THE HORIZONTAL LOCATION OF THE TRAVERSE WAS ESTABLISHED BY GPS CONTROL MONUMENTS Y-234 AND TRAVERSE POINTS 114X AND 114Y. THE HORIZONTAL ACCURACY OF THE EXPECTED HORIZONTAL ACCURACY OF THE CCOL CONTROL MONUMENTS IS ± 0.05'. ALL GPS PROCESSING WAS PERFORMED USING RTK (REAL TIME KINEMATIC) SOFTWARE CONNECTED TO THE FDOT (FLORIDA DEPARTMENT OF TRANSPORTATION) THE HORIZONTAL CLOSURE OF THE TRAVERSE SHOWN HEREON MEASURES ± 0.002 FEET OR LESS. THE VERTICAL VALUES FOR THE CCOL CONTROL MONUMENTS WERE ESTABLISHED BY A THIRD ORDER LEVEL RUN. THE VERTICAL CONTROL MARKS FOR THE LEVEL RUN WERE NATIONAL GEODETIC SURVEY BENCHMARK Y-311 "A26204", A BRASS DISC SET ON THE TOP OF THE EAST SIDE OF THE BASE OF THE COAST GUARD STATION LIGHTHOUSE ABOUT 2.35 MILES FROM THE JUNCTION OF STATE HIGHWAY A-1-A FROM THE JUNCTION OF STATE HIGHWAY 814 AT POMPAHO BEACH, 10 FEET SOUTH OF THE SOUTHEAST CORNER OF THE STEPS LEADING UP TO LIGHTHOUSE, 14.6 FEET WEST OF THE SOUTHEAST LEG OF THE LIGHTHOUSE AND ABOUT LEVEL WITH THE GROUND; ELEVATION=8.63'; AND BENCHMARK 14.745, "A26292", IS A SURVEY DISC IN THE TOP OF A CONCRETE DRAIN DITCH DEDICATED TO STATE HIGHWAY 814, ABOUT 1.5 MILES FROM THE JUNCTION OF STATE HIGHWAY A-1-A, ELEVATION=13.17'. EXPECTED VERTICAL ACCURACY OF CC MONUMENTS IS ± 0.03'

CCOL CONTROL MONUMENTS	LATITUDE	LONGITUDE	NORTHING	EASTING	ELEVATION MAH 1988	SCALE FACTOR	CONVERGENCE
R-28	26°15'01.598"	-80°05'06.912"	977175.9	955971.7	9.73'	1.00004424	0.241659292
R-30	26°14'43.591"	-80°05'17.988"	699594.7	955570.2	11.52'	1.00004398	0.24161428



PZ21-2450061
8/25/2021

SCALE: 1" = 20'-0"